

Key to the subgenera of *Schizoptera* Fieber



S. (Orthorhagus) sp.



S. (Schizoptera) sp.



S. (Odontorhagus) sp.



S. (Lophopleurum) sp.

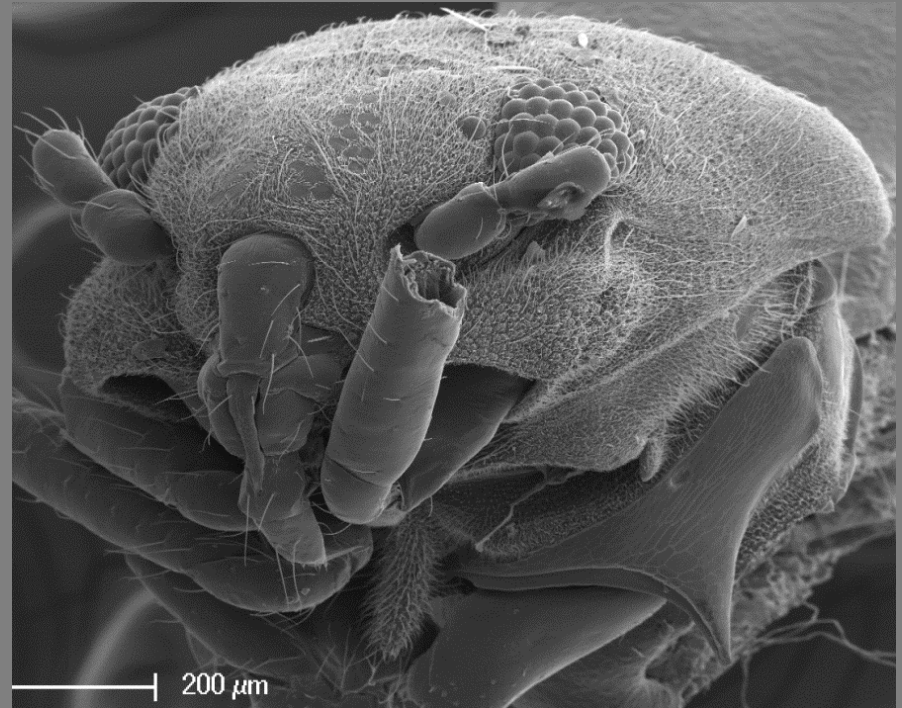
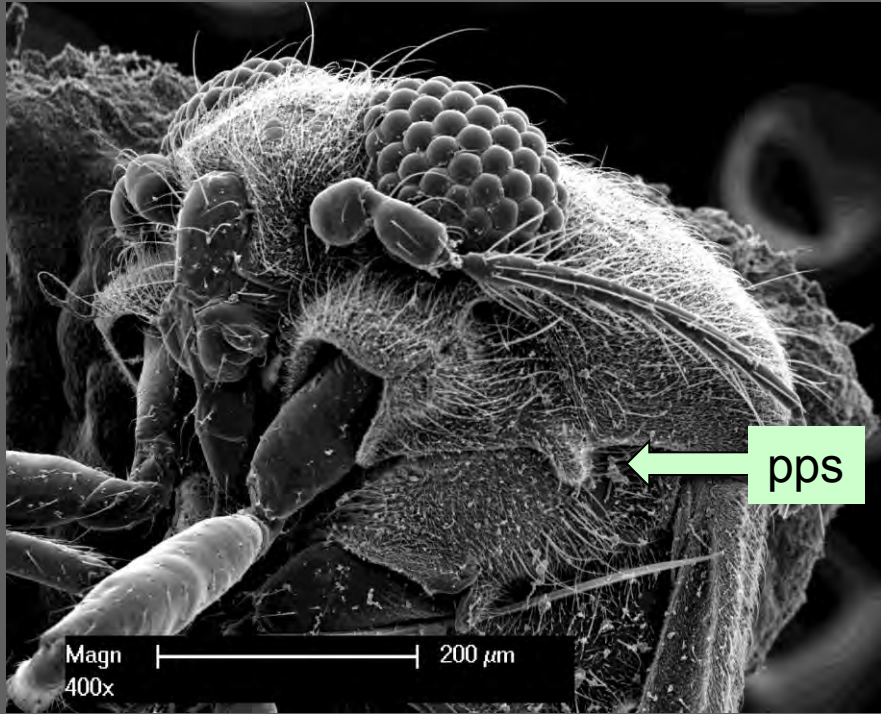


S. (Lophopleurum) sp.

Mariana Romo, Stephanie Leon, and Christiane Weirauch



1	Prothorax without a collar.....subgenus <i>Orthorhagus</i>	
1'	Prothorax with a collar	2



2	Epimeron with conspicuous blunt spine (pps) on the posterior margin just ventral to the termination of the horizontal pronotal suture..... Subgenus <i>Odontorhagus</i>	
2'	Epimeron without a posterior spine, pronotal suture terminating at humeral angle of pronotum	3



Fig. 1: wing extended, posterior cell triangular



Fig. 2: wing extended, posterior cell rectangular

3	Posterior membranal cell (shaded) triangular and apically pointed when wing extended (Fig. 1).....subgenus <i>Zygophleps</i>	
3'	Posterior membranal cell (shaded) rectangular when wing extended (Fig. 2)	4

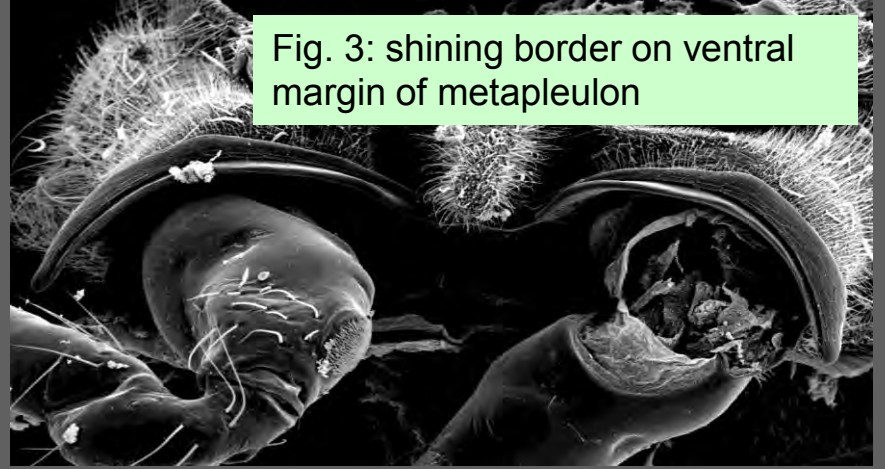


Fig. 3: shining border on ventral margin of metapleuron

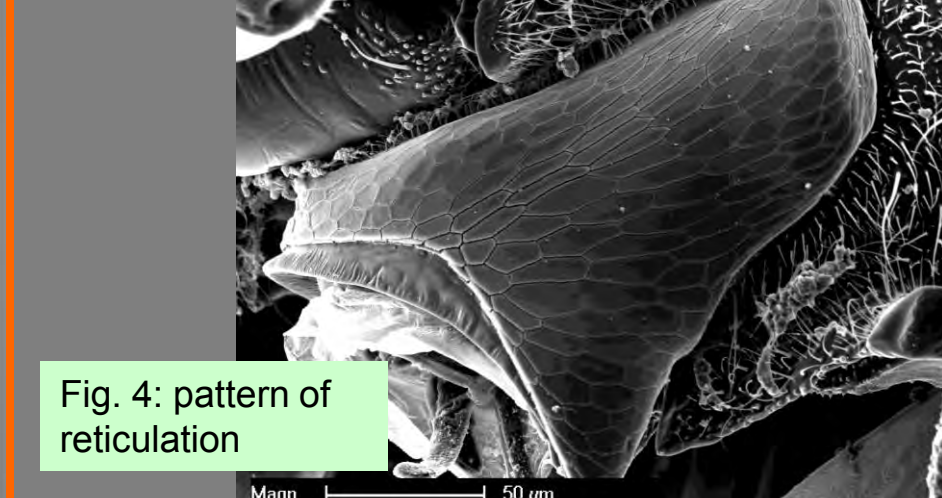


Fig. 4: pattern of reticulation

Magn |-----| 50 μm

4 Metapleuron uniformly sculptured (green arrow), though the ventral margin sometimes with a narrow shining border (Fig. 3).....subgenus *Schizoptera*

4' Metapleuron with an elevated shining area (orange arrow) usually with differentiated delicate reticulate pattern of sculpturing (Fig. 4)

5



Fig. 5: elevated area extending only half way up metapleuron

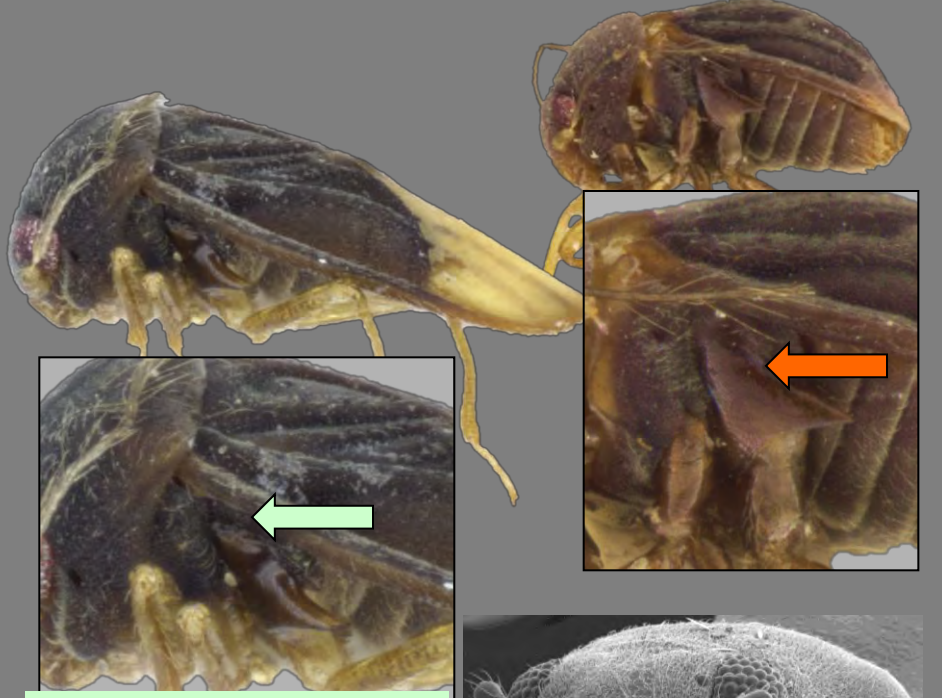
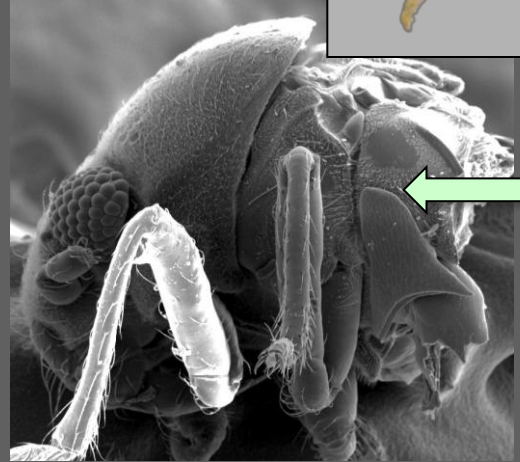
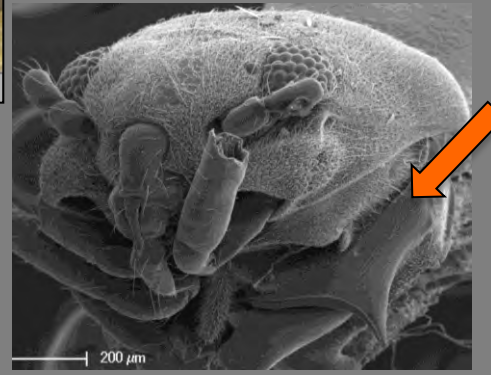


Fig. 6: elevated area extending almost to the edge of forewing



5 Elevated area (orange arrow) extending only half way up metapleuron (fig. 5).....subgenus *Cantharocoris*

5' Elevated area (orange arrows) extending up metapleuron as far as, or almost as far as (fig. 6), the edge of the forewing when in repose.....subgenus *Lophopleurum*